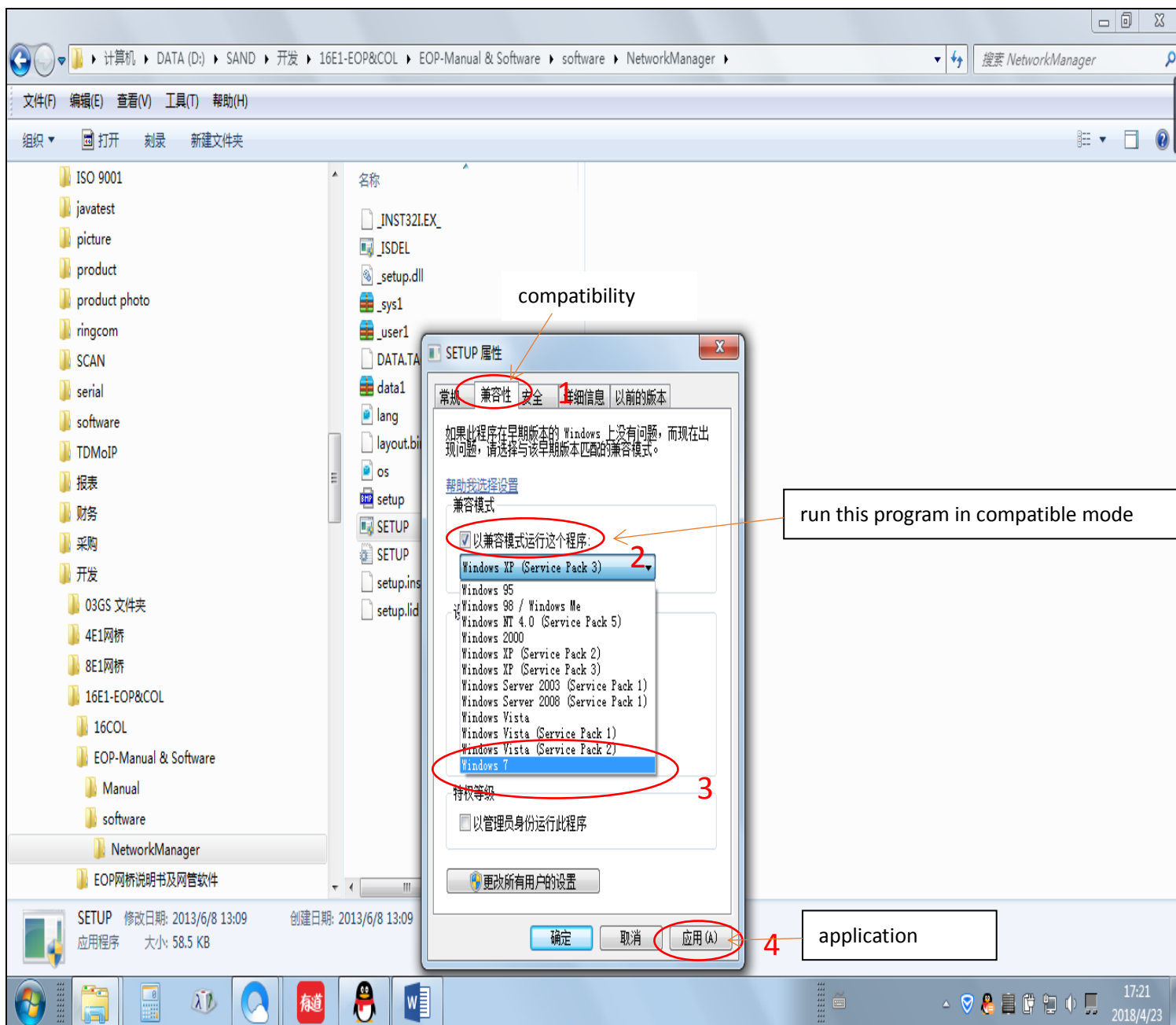
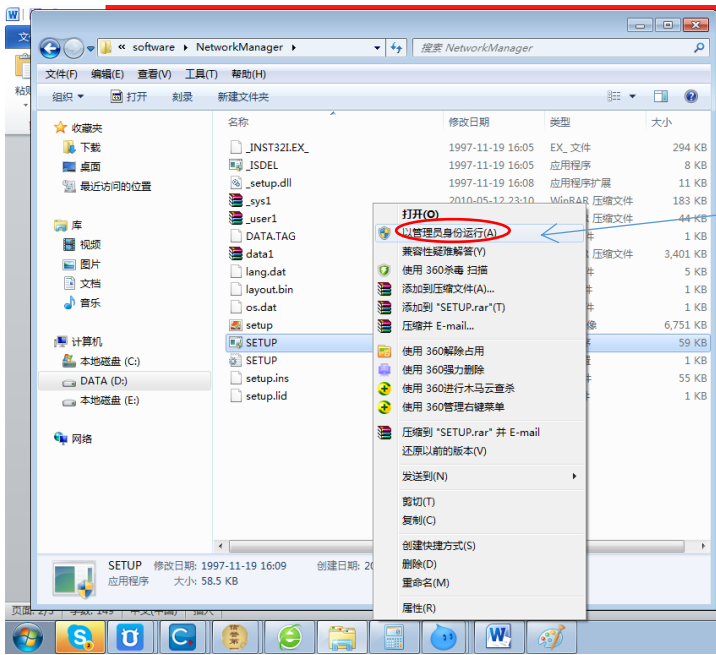


用鼠标选中安装文件，点击右键，选中属性。

Use the mouse to select the installation files, click the right button, and select the properties.



1. 选中“兼容性”
 2. 选中“以兼容模式运行这个程序”
 3. 在下拉菜单中选中“Window 7”
 4. 点击“应用”
 5. 选中 setup, 点击右键, 选中“以管理员身份运行”
1. Select "compatibility"
 2. Select "run this program in compatible mode"
 3. Select "Window 7" in the drop-down menu.
 4. Click "application"
 - 5, select setup, click right, select "run as administrator".



5. run as administrator